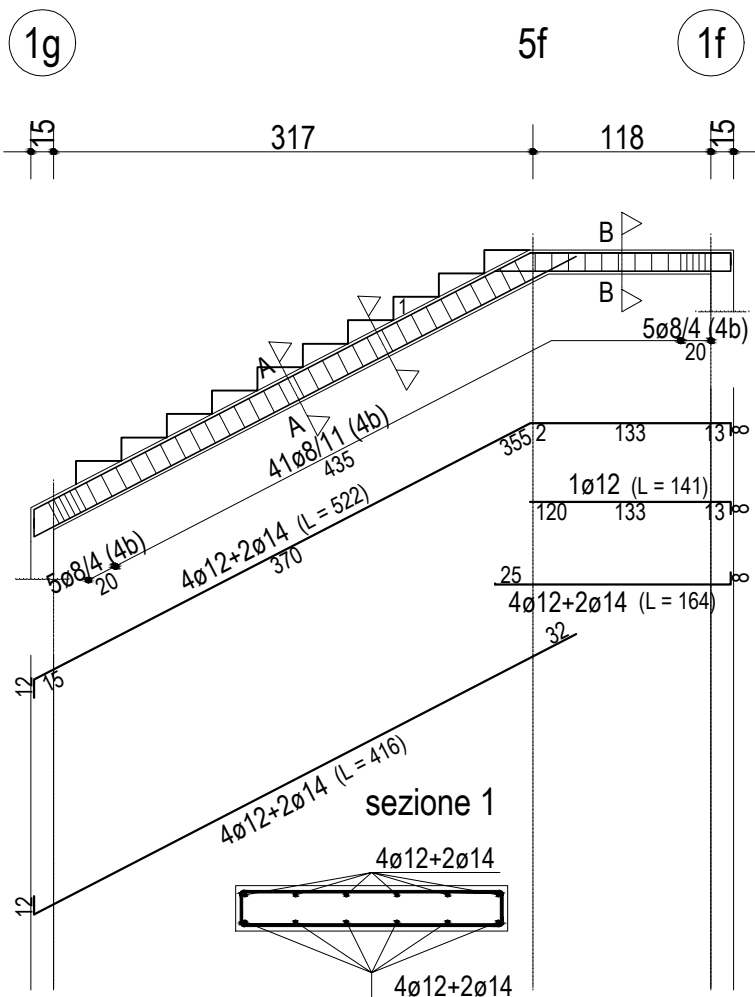
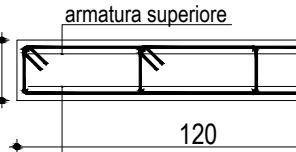


RAMPE DI COLLEGAMENTO PIANO TERRA - PIANO PRIMO

SCALA 1g-5f-1f



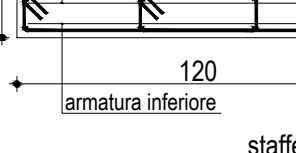
Sezione A-A



Sezione B-B



Particolare gradino

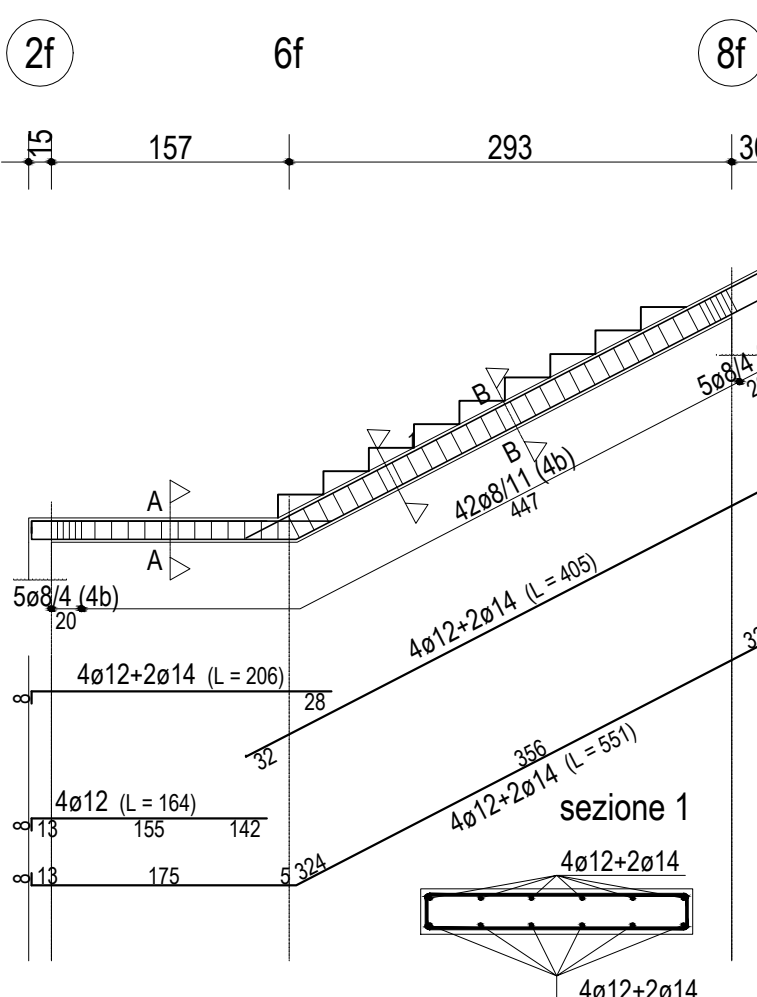


sezione 1

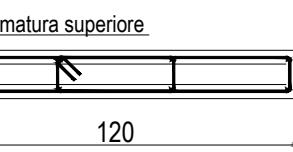


rampa 1

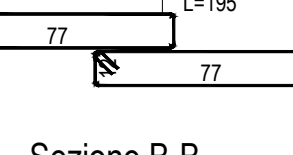
SCALA 2f-6f-8f



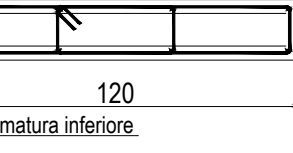
Sezione A-A



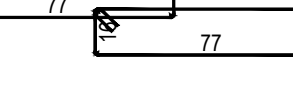
Sezione B-B



Particolare gradino

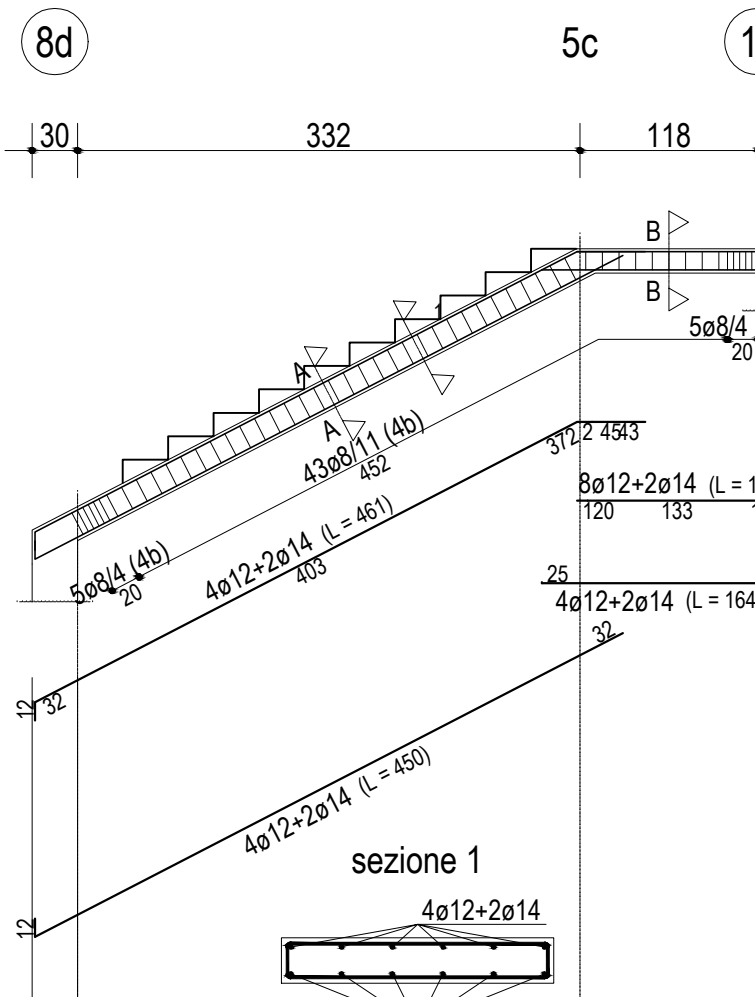


sezione 1

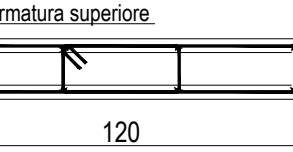


rampa 2

SCALA 8d-5c-1c



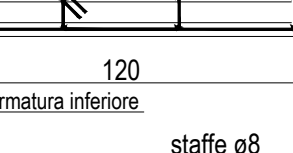
Sezione A-A



Sezione B-B



Particolare gradino

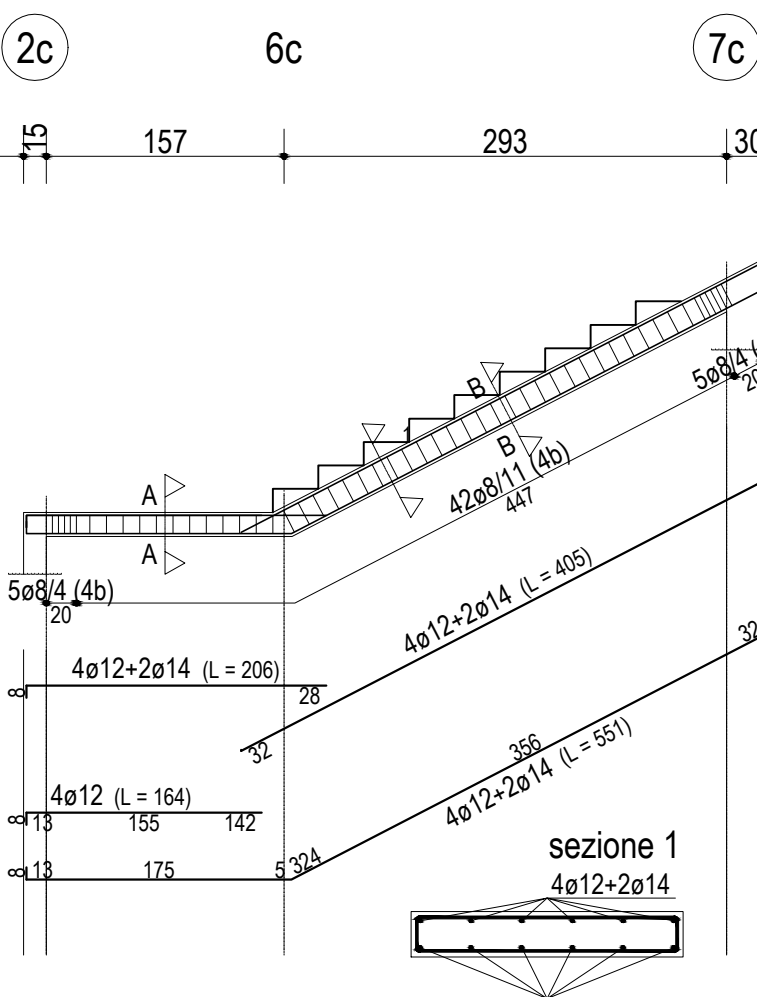


sezione 1

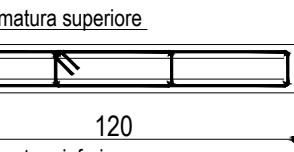


rampa 7

SCALA 2c-6c-7c



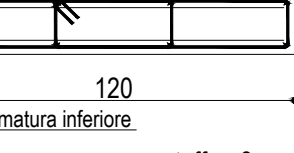
Sezione A-A



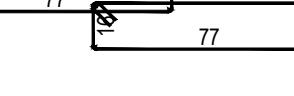
Sezione B-B



Particolare gradino



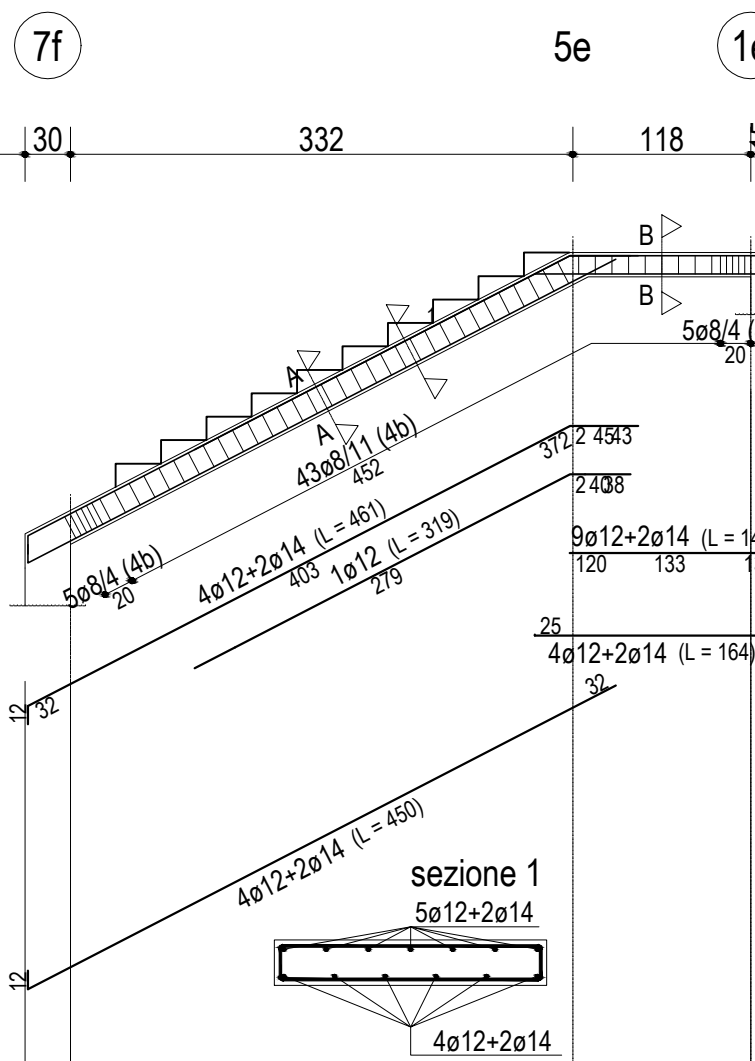
sezione 1



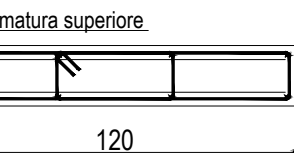
rampa 8

RAMPE DI COLLEGAMENTO PIANO PRIMO - PIANO SECONDO

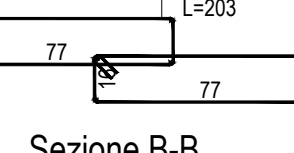
SCALA 7f-5e-1e



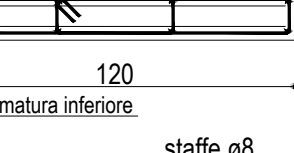
Sezione A-A



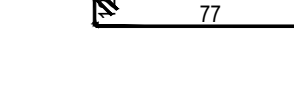
Sezione B-B



Particolare gradino

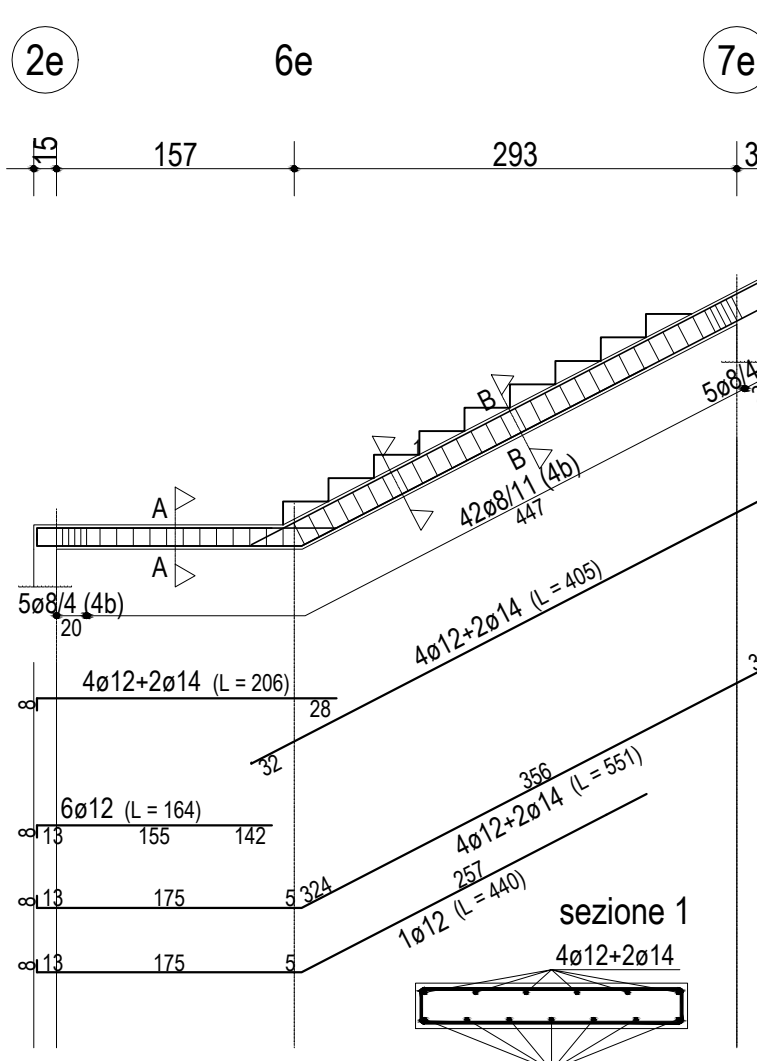


sezione 1

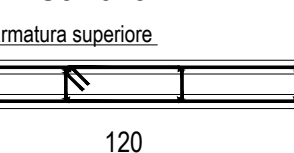


rampa 3

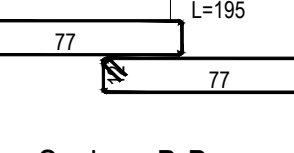
SCALA 2e-6e-7e



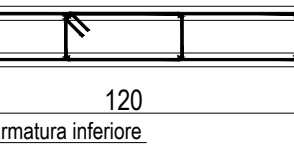
Sezione A-A



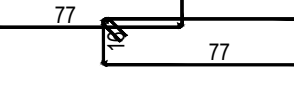
Sezione B-B



Particolare gradino



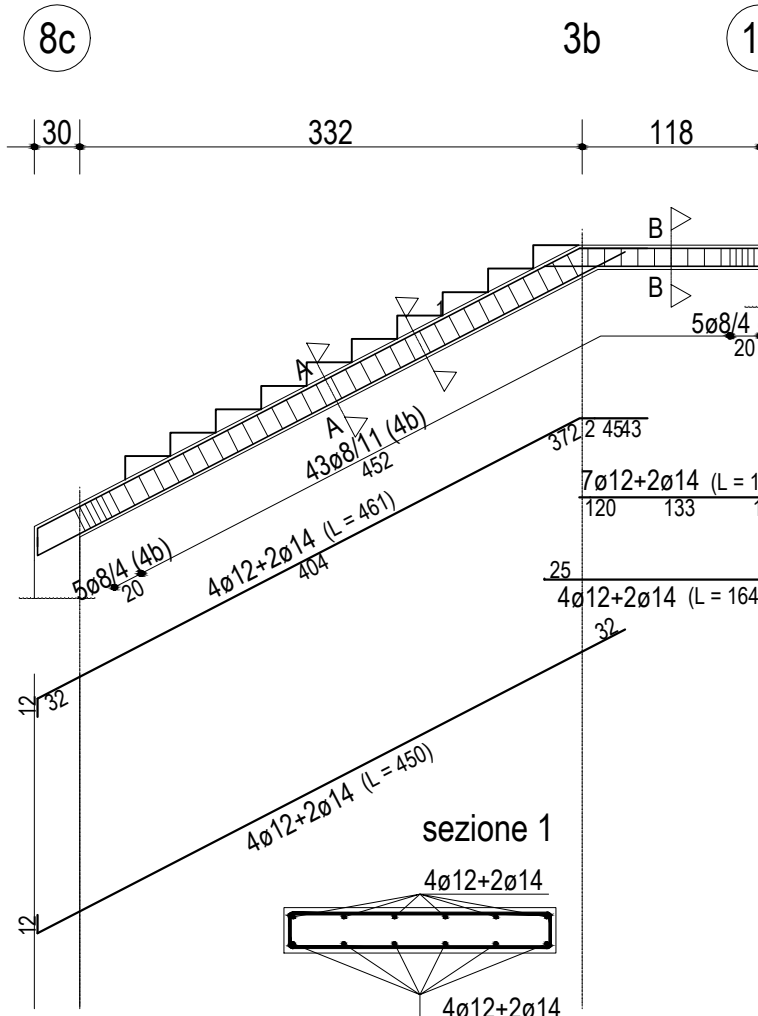
sezione 1



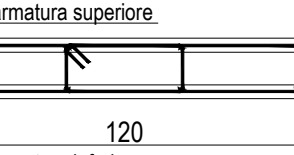
rampa 4

RAMPE DI COLLEGAMENTO PIANO QUARTO - PIANO COPERTURA

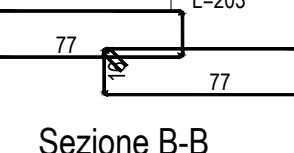
SCALA 8c-3b-1b



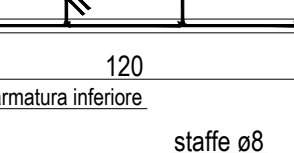
Sezione A-A



Sezione B-B



Particolare gradino

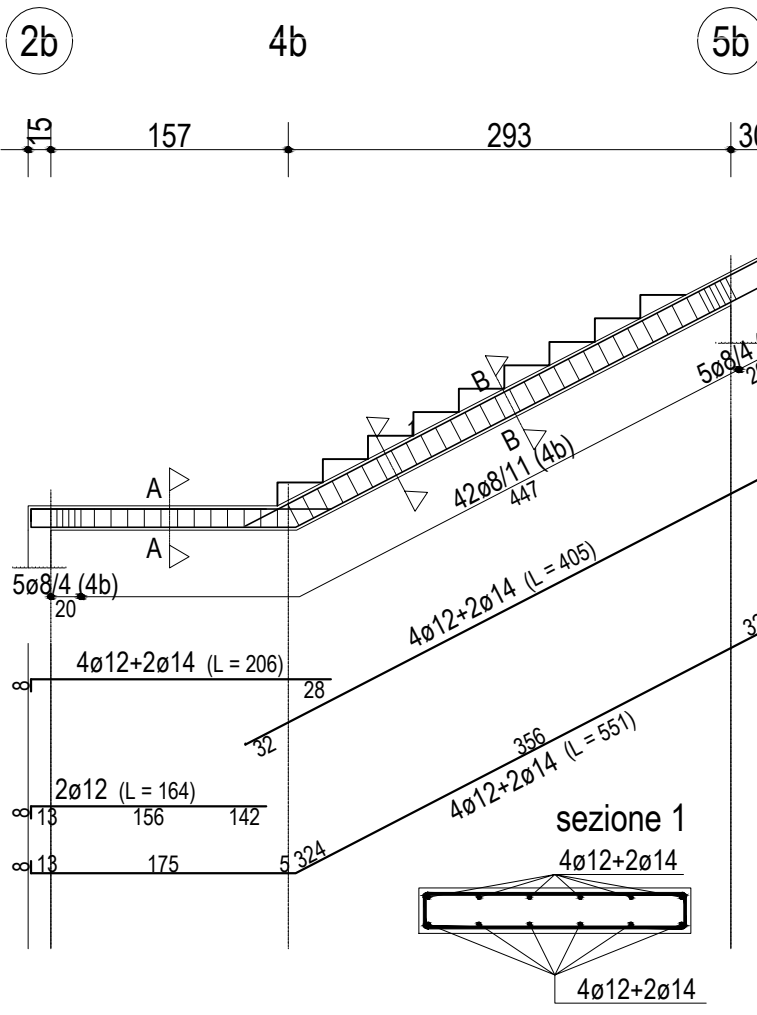


sezione 1

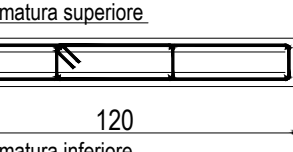


rampa 9

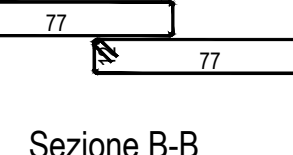
SCALA 2b-4b-5b



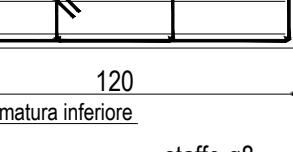
Sezione A-A



Sezione B-B



Particolare gradino



sezione 1



rampa 10

MATERIALI PER STRUTTURE IN C.A.

- CALCESTRUZZO PER STRUTTURE ARMATE**
Classe di esposizione ambientale XC1 e XC2 (UNI 11104). Classe di consistenza al getto S3,
Dmax aggregati 32 mm e le seguenti classi di resistenza:

Pali di fondazione _____ Classe C20/25 con copriferro 40 mm

Platea di fondazione _____ Classe C25/30 con copriferro 25 mm

Strutture in elevazione _____ Classe C28/35 con copriferro 20 mm

- ACCIAIO IN BARRE B450C**
Tondini di diametro max Ø 20 mm

ARCA CAPITANATA
AGENZIA REGIONALE per la CASA e l'ABITARE

FONDO DI SVILUPPO E COESIONE 2007-2013

Regione Puglia - "Settore Aree Urbane - Città"

Finanziamento: € 1.200.000,00

Finanziamento integrativo: € 450.000,00 (Economie rivenienti dalle Leggi 457/78, 67/88 e 179/92)

Realizzazione di n° 9 alloggi di edilizia residenziale pubblica nel
Comune di Margherita di Savoia (BT) in Via Carlo Afan De Rivera

Finanziamento complessivo: € 1.650.000,00

TIVIBRO	IL RESPONSABILE UNICO DEL PROCEDIMENTO:	ing. Vincenzo De Devitis (Dirigente del Settore Tecnico)
	IL PROGETTISTA ARCHITETTONICO:	ing. Antonio Verrastro u.o. Progettazione / Appalti
	IL PROGETTISTA DELLE STRUTTURE E DEGLI IMPIANTI TECNOLOGICI:	ing. Francesco Lovino Via Barbarisco n. 7 - 76121 Barietta
	IL COORDINATORE DELLA SICUREZZA IN FASE DI PROGETTAZIONE:	ing. Francesco Salei u.o. Costruzione / Recupero

TAVOLA	TITOLO	SCALA
S16	ARMATURA SCALE	1:50
AGGIORNAMENTI	L'IMPRESA	DATA
RIF.	IL DIRETTORE DEI LAVORI	